



## State of New Jersey

Department of Environmental Protection  
SITE REMEDIATION AND WASTE MANAGEMENT PROGRAM  
Division of Remediation Management  
Remediation Oversight Element

Mail Code 401-05A  
P.O. Box 420  
Trenton, NJ 08625  
609-984-1351  
Fax: 609-984-6514

PHILIP D. MURPHY  
*Governor*

SHEILA Y. OLIVER  
*Lt. Governor*

CATHERINE R. McCABE  
*Commissioner*

Honeywell  
Ms. Maria Kaouris  
Remediation Manager  
115 Tabor Road, 4-D4  
Morris Plains, NJ 07950  
via email

January 3, 2019

### Approval

Re: Consent Judgment Compliance Letter  
Remedial Action Type: Restricted Use for Groundwater  
Scope of Remediation: Entire Site - Chromate Chemical Processing Waste (CCPW) and CCPW-Related Metals - Allied  
Hudson County Chromate (HCC) Study Area 5 Chromium Remedy  
HCC Site 117  
Program Interest Number: 008809  
Blocks/Lots: Block 26101, Lots 1.01 and 1.02  
Jersey City, Hudson County, NJ

Dear Ms. Kaouris:

The New Jersey Department of Environmental Protection (Department) has reviewed the site soil and groundwater remediation documents submitted by Honeywell pursuant to Paragraph 23.E of the 2011 Consent Judgment, and associated documents regarding remediation of chromate chemical production waste (CCPW) and CCPW-related metals (defined as hexavalent chromium, antimony, chromium, nickel, thallium, and vanadium) at HCC Site 117, information in the Department's case file, and the certified representations and information provided to the Department.

The Department issued a Remedial Action Groundwater Permit (Permit No. RAP 170001) for shallow groundwater (monitored natural attenuation) at HCC Site 117 on July 18, 2018. The deeper groundwater zones, referred to as the deep overburden and bedrock zones, are addressed by Remedial Action Groundwater Permits for Site 117 Former Ryerson Steel (PI No.008809) issued on July 27, 2018 (Permit No. 170002 – Deep Overburden and Permit No. 170003 – Bedrock Zone). See Attachment 1 for site location map and figures from the Remedial Action Groundwater Permits showing extent of Classification Exception Areas for the shallow, deep overburden, and bedrock zones.

Based on the information provided, the Department concludes that the remediation of the CCPW and CCPW-related metals in groundwater is protective of public health, safety, and the environment. The

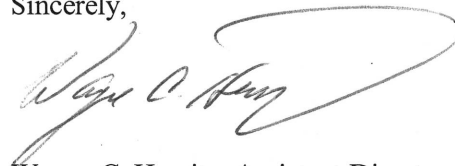
Department further concludes that the remediation satisfies the requirements of the Consent Judgment in New Jersey Department of Environmental Protection, et al. v. Honeywell International Inc., et al., Docket No C-77-05, Superior Court of New Jersey, Chancery Division-Hudson County (filed September 7, 2011) (“Consent Judgment”), the Technical Requirements for Site Remediation at N.J.A.C. 7:26E, and the Administrative Requirements for Remediation of Contaminated Sites at N.J.A.C. 7:26C. As a result, the Department has determined that remediation of the CCPW and CCPW-related metals in groundwater are not subject to further review pursuant to N.J.S.A. 58:10C-21 and 58:10C-25.

By operation of law, a Covenant Not to Sue pursuant to N.J.S.A. 58:10B-13.2 applies to this remediation of CCPW and CCPW-related metals in groundwater. The Covenant Not to Sue is subject to any conditions and limitations contained herein, and remains effective as long as the real property referenced above continues to meet those conditions. This includes the need to continue to comply with any permit Honeywell is required to obtain or has obtained. Anticipated permits include monitoring well installation permits for any new monitoring wells and well decommissioning notice per N.J.A.C. 7:9D-3 for the eventual decommissioning of any site monitoring wells.

This letter serves as the functional equivalent to No Further Action (“NFA”) letters issued pursuant to N.J.S.A. §58:10B-13.1 and N.J.A.C. 7:26C before those provisions were amended effective in 2012 to no longer authorize NFA letters. The Department recognizes this letter as serving the same function as previously served by NFA letters, and satisfies the same legal obligations formerly met by NFA letters, for sites regulated directly by NJDEP.

The Department requests Honeywell submit copies of this letter to the appropriate parties. If you have any questions regarding this matter, please contact me at (609) 984-1351.

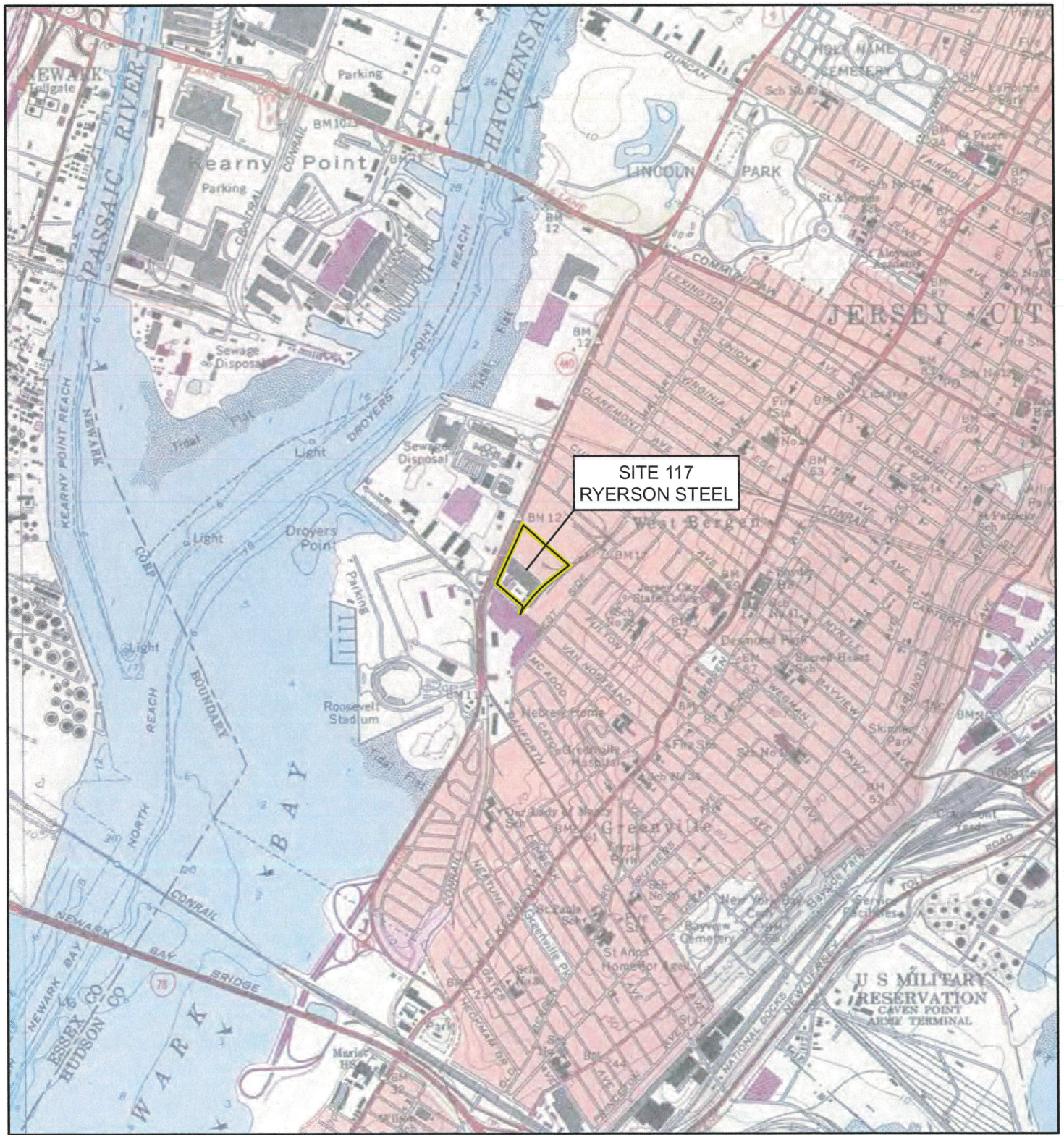
Sincerely,

A handwritten signature in black ink, appearing to read "Wayne C. Howitz", written over a large, loopy flourish.

Wayne C. Howitz, Assistant Director  
NJDEP

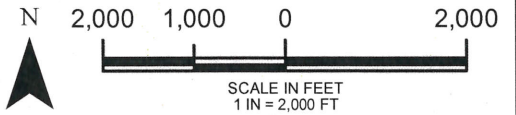
cc: John Morris, Honeywell  
William Hague, Honeywell  
Jersey City Department of Health & Human Services  
Municipal Clerk, City of Jersey City  
Hudson County Regional Health Commission  
David Doyle, NJDEP Case Manager  
Kirstin Pointin-Hahn, NJDEP BCAIN

**ATTACHMENT 1**



SITE 117  
RYERSON STEEL

NAD 1983 STATEPLANE NEW JERSEY FIPS 2900 FEET



**LEGEND**

 SITE BOUNDARY

ESRI BASEMAP; UNITED STATES GEOLOGICAL SURVEY (USGS) 7.5-MINUTE QUADRANGLE MAP. COPYRIGHT © 2018 NATIONAL GEOGRAPHIC SOCIETY, I-CUBED.

**wood.**  
 ENVIRONMENT & INFRASTRUCTURE SOLUTIONS, INC.  
 200 AMERICAN METRO BLVD, SUITE 113  
 HAMILTON, NEW JERSEY 08619

**FIGURE 1**  
 SITE LOCATION MAP  
 STUDY AREA 5  
 SITE 117 RYERSON STEEL  
 JERSEY CITY, NEW JERSEY  
 BLOCK 26101, LOTS 1.01 & 1.02

PROJ. NO.	3482180595	11/07/2018	REV.
DWN. BY.	WSL	CHKD BY.	EGG

Exhibit B (CEA Boundaries)



Honeywell Main Facility Shallow Overburden Aquifer  
- PI #008809; Subject Item ID 167476

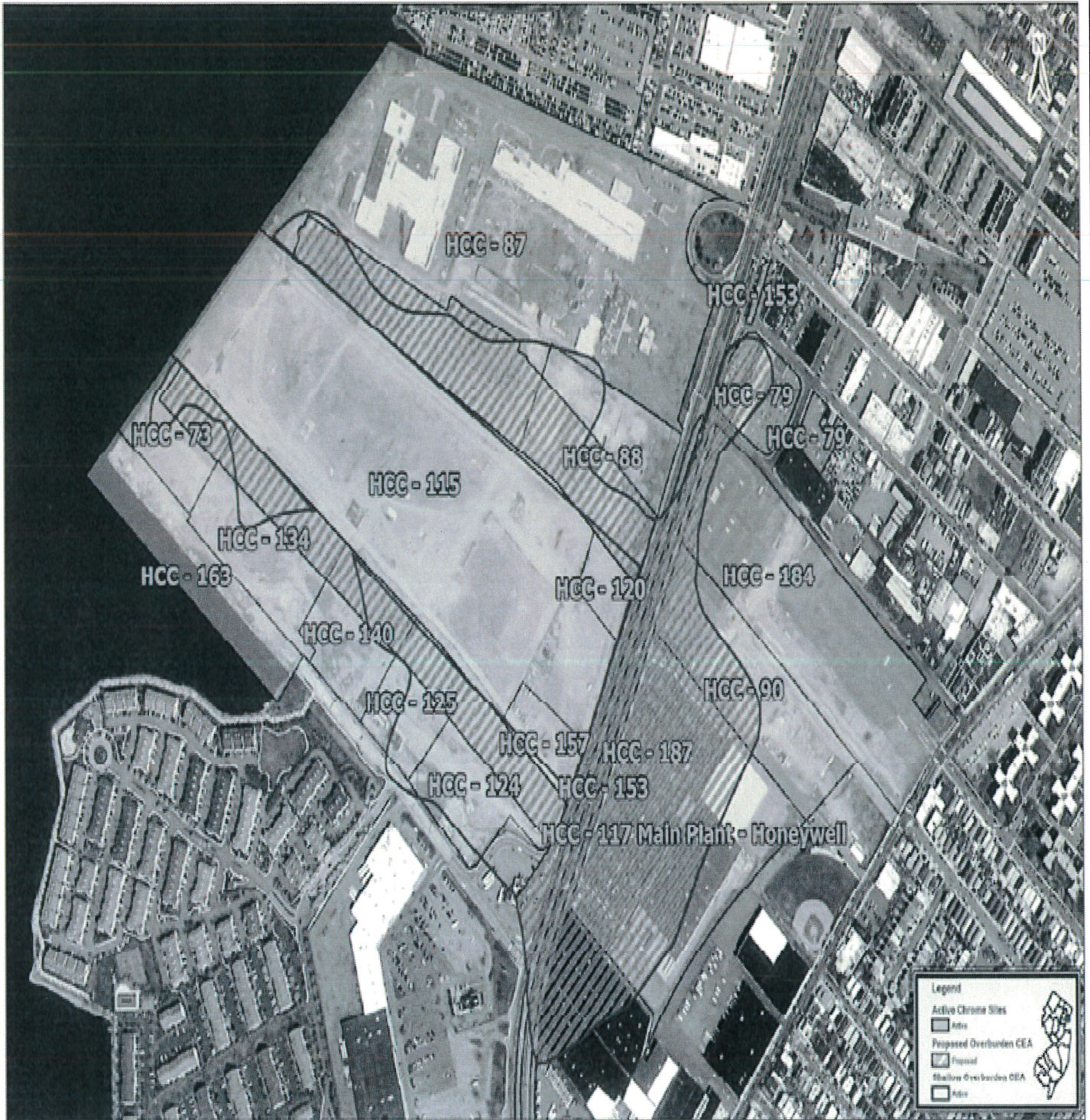


Exhibit B (CEA Boundaries)



Honeywell Main Facility Deep Overburden Aquifer  
- PI #008809; Subject Item ID 167477

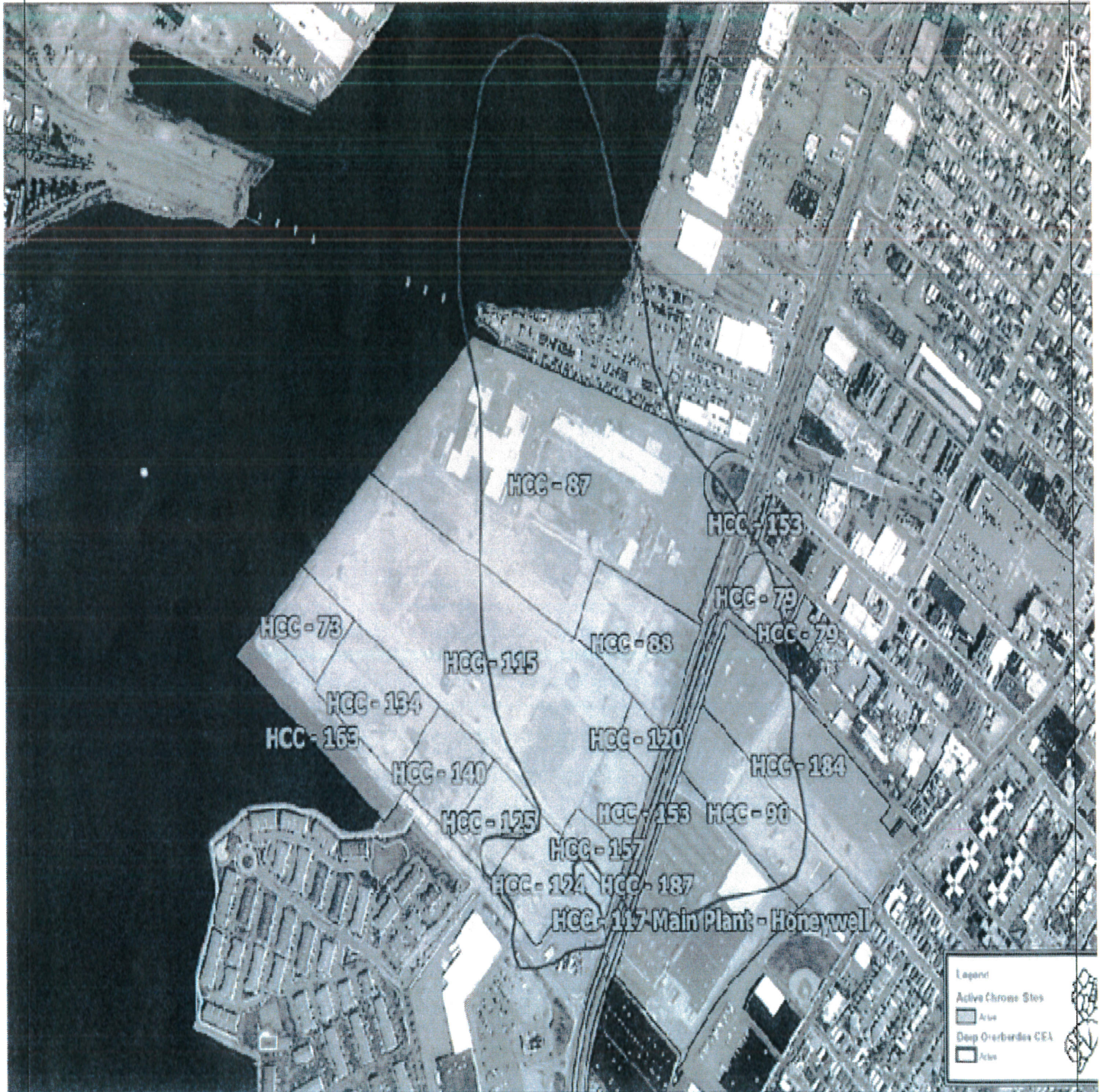


Exhibit B (CEA Boundaries)



Honeywell Main Facility Bedrock Aquifer  
- PI #008809; Subject Item ID 167478

